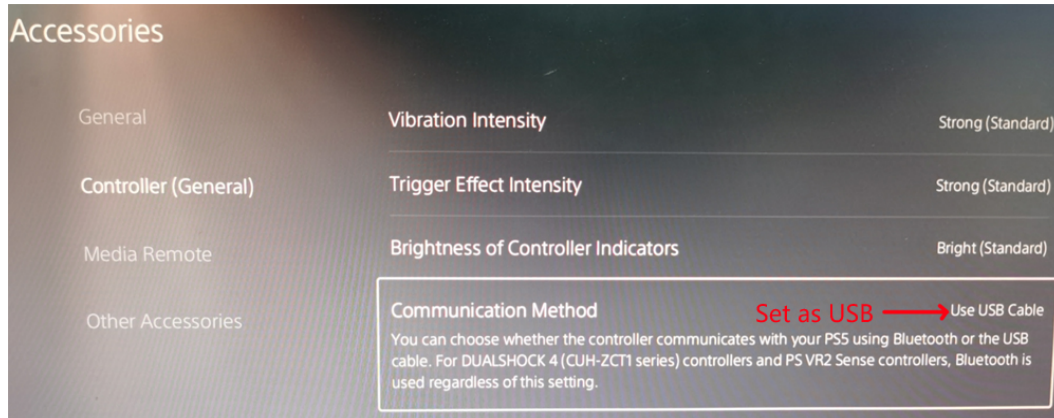


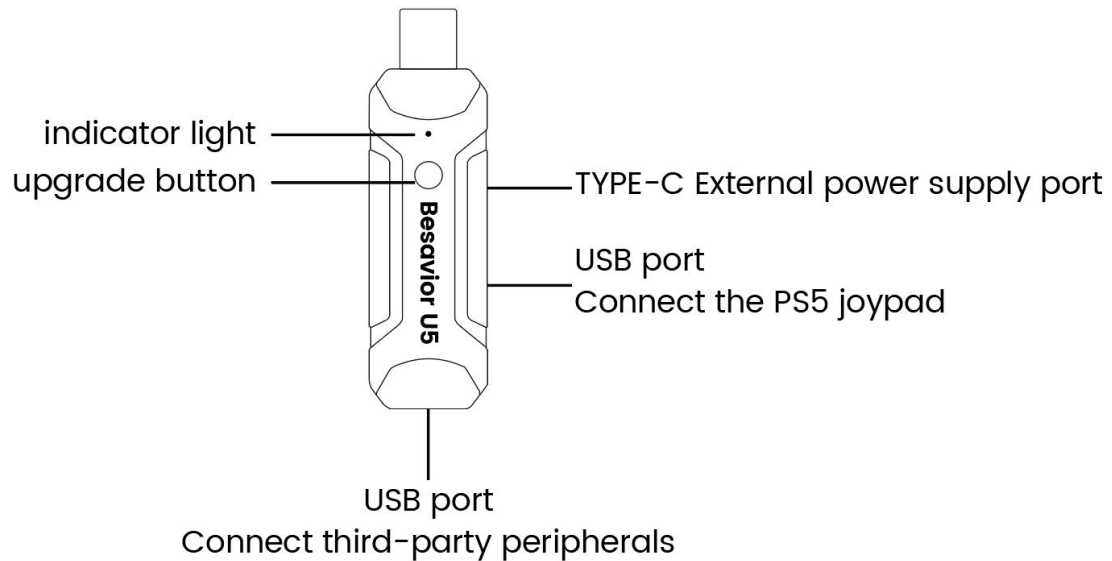
Besavior U5 Manual

1. Introduction

Besavior U5 uses USB wired mode to connect to PS5 console, please turn on the USB connection function of PS5 console before use:



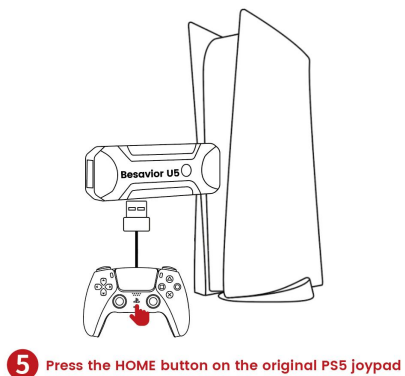
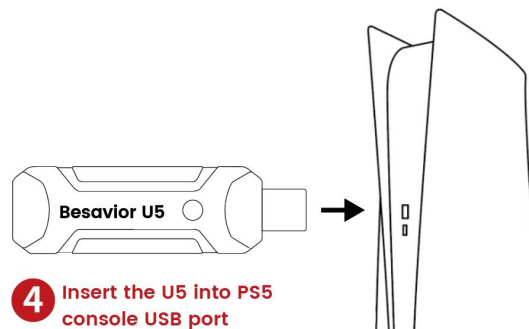
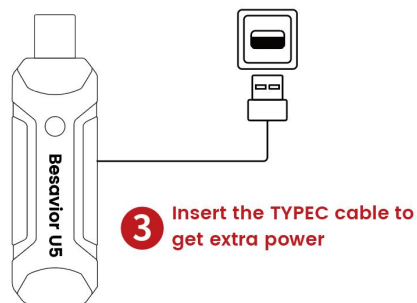
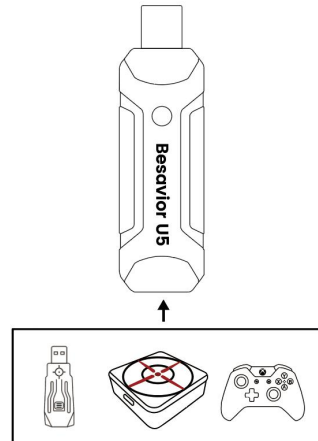
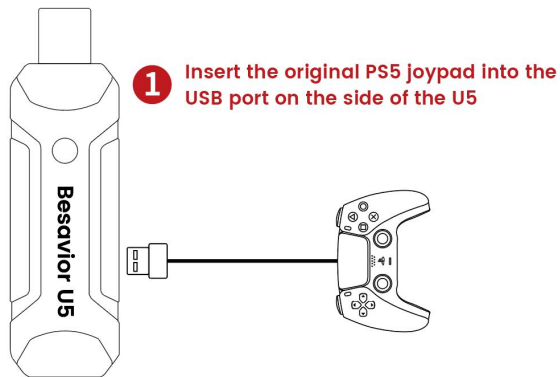
Functions of buttons and interfaces of U5 are as follows:



Free 50cm TYPE-C Extra Power cable*1

2. How to use

After the PS5 controller is fully charged (insufficient power will cause the U5 to fail to use), follow the following steps:

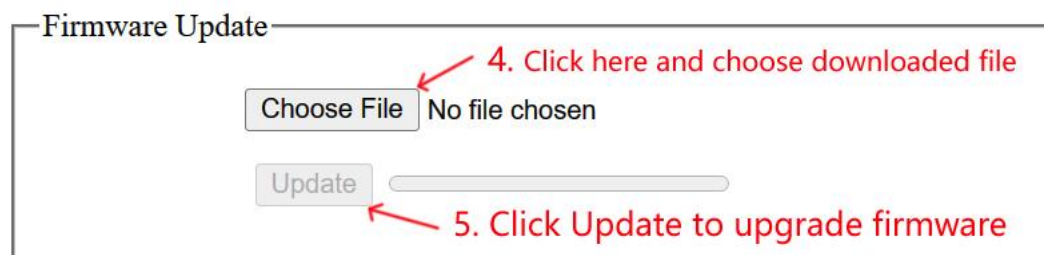


6 the user tests whether the PS5 controller works properly, and then operates the third-party USB peripheral after the controller can work.

3. How to upgrade

1. Download the latest upgrade software and firmware from [the forum of the official website](#) and decompress them to the computer disk.
2. Hold down the Besavior U5 upgrade button and insert the Besavior U5 into the USB port of the WINDOWES PC
3. Open the index.html in the upgrade file with your **Microsoft Edge** browser and follow these steps.

Besavior U5 Update



Besavior U5 Update



For more tutorials, please visit Besavior U5 at forum.beloder.com.